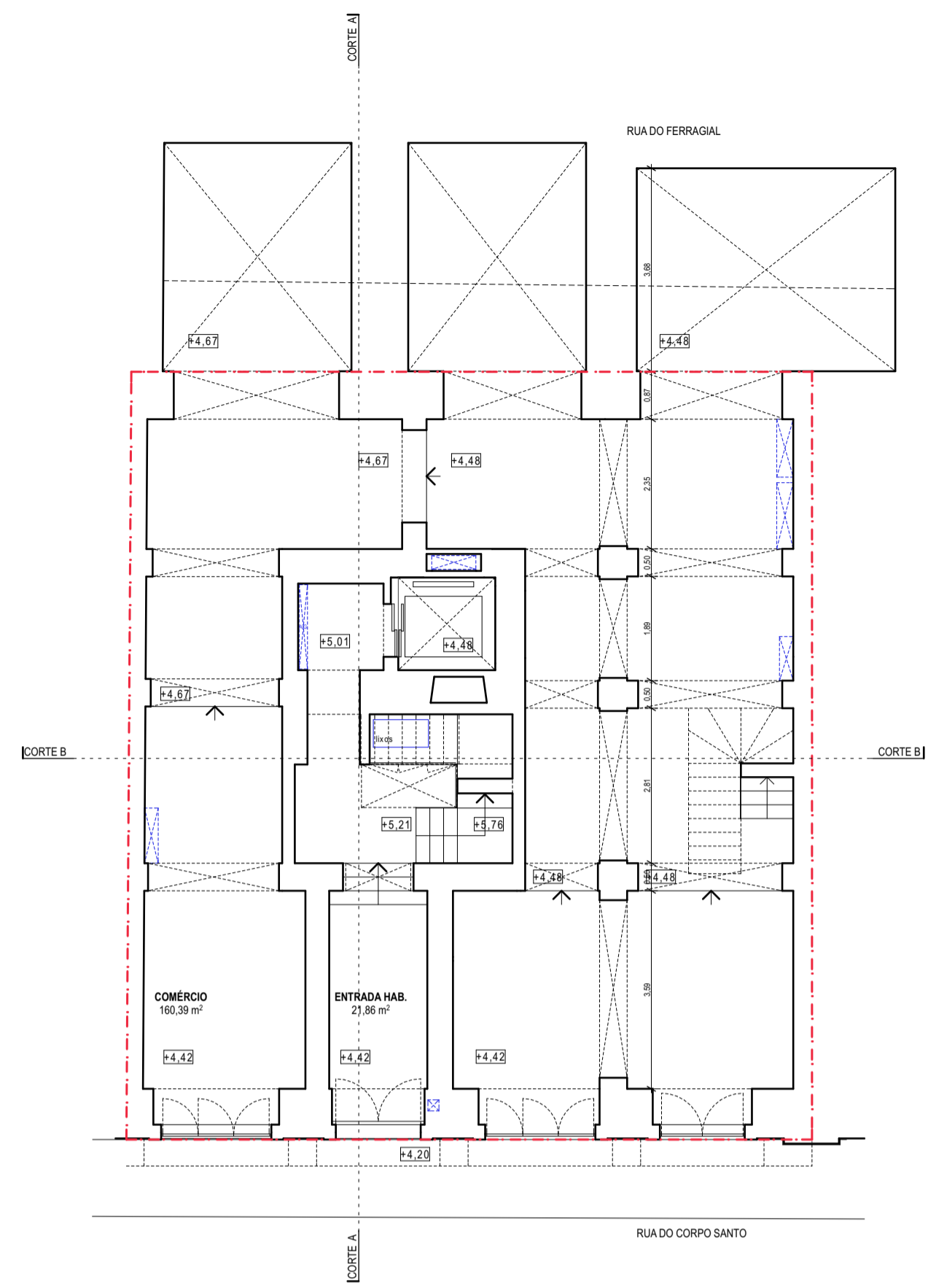
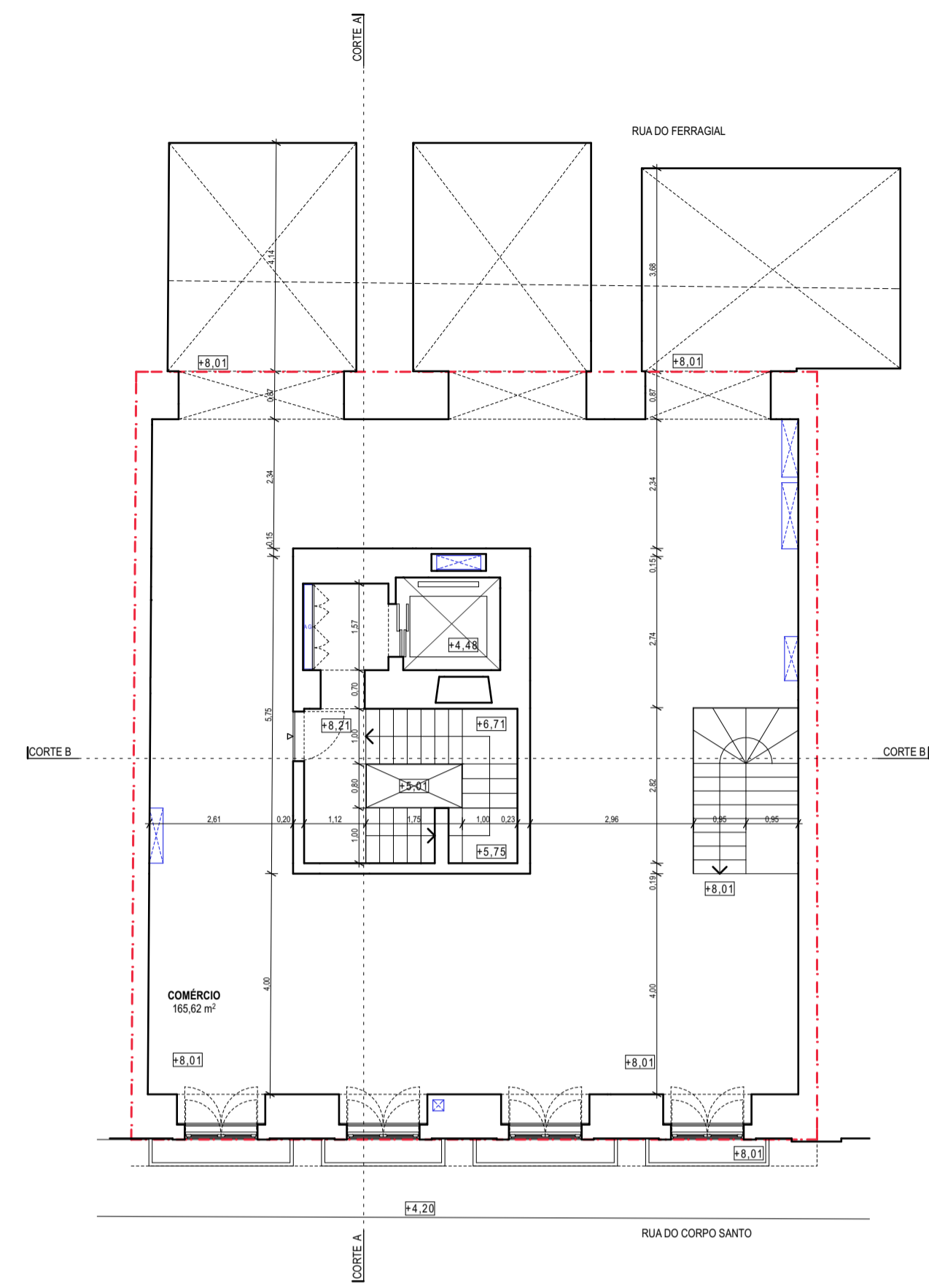


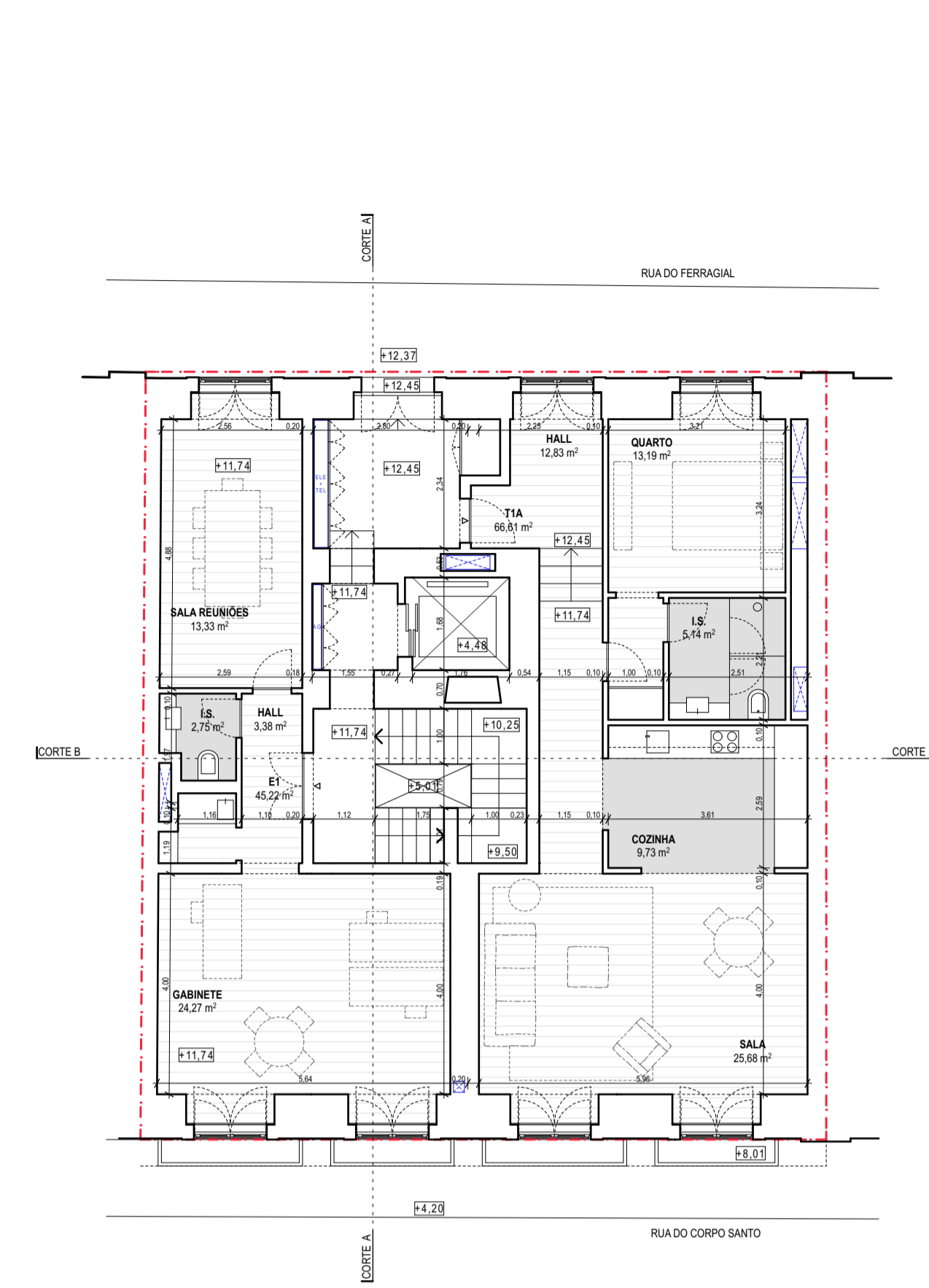
PISO -2



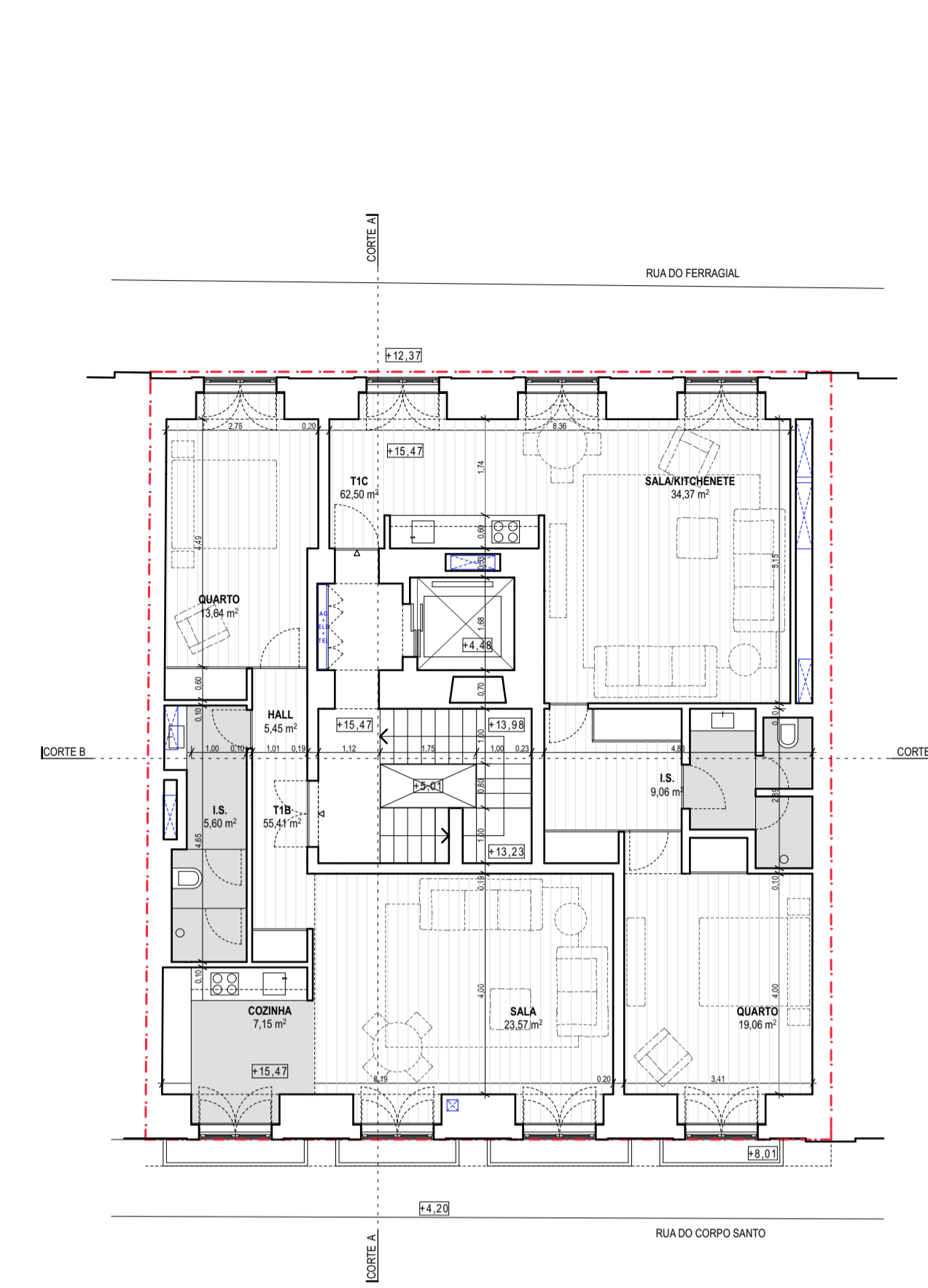
PISO -1



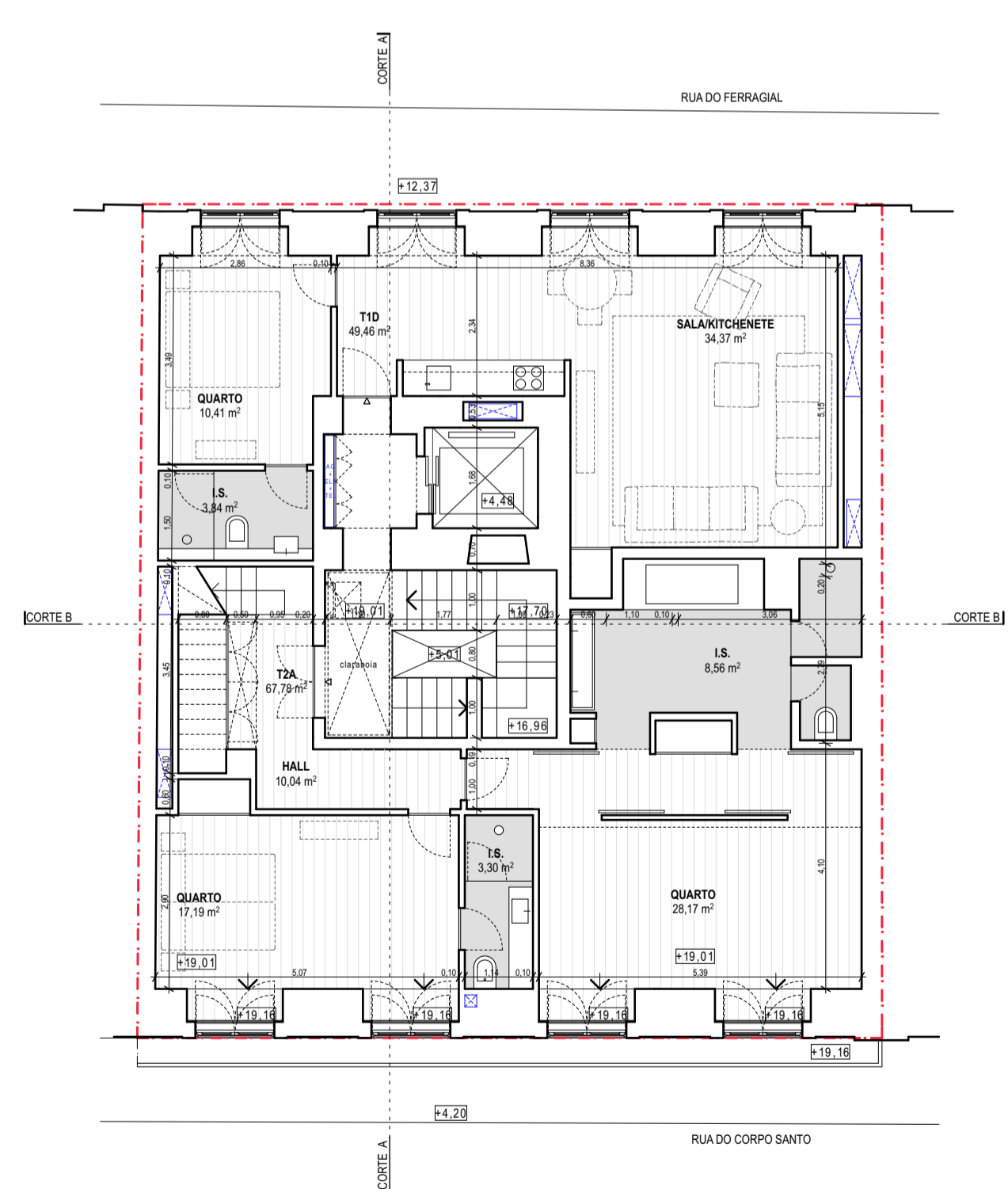
PISO 0



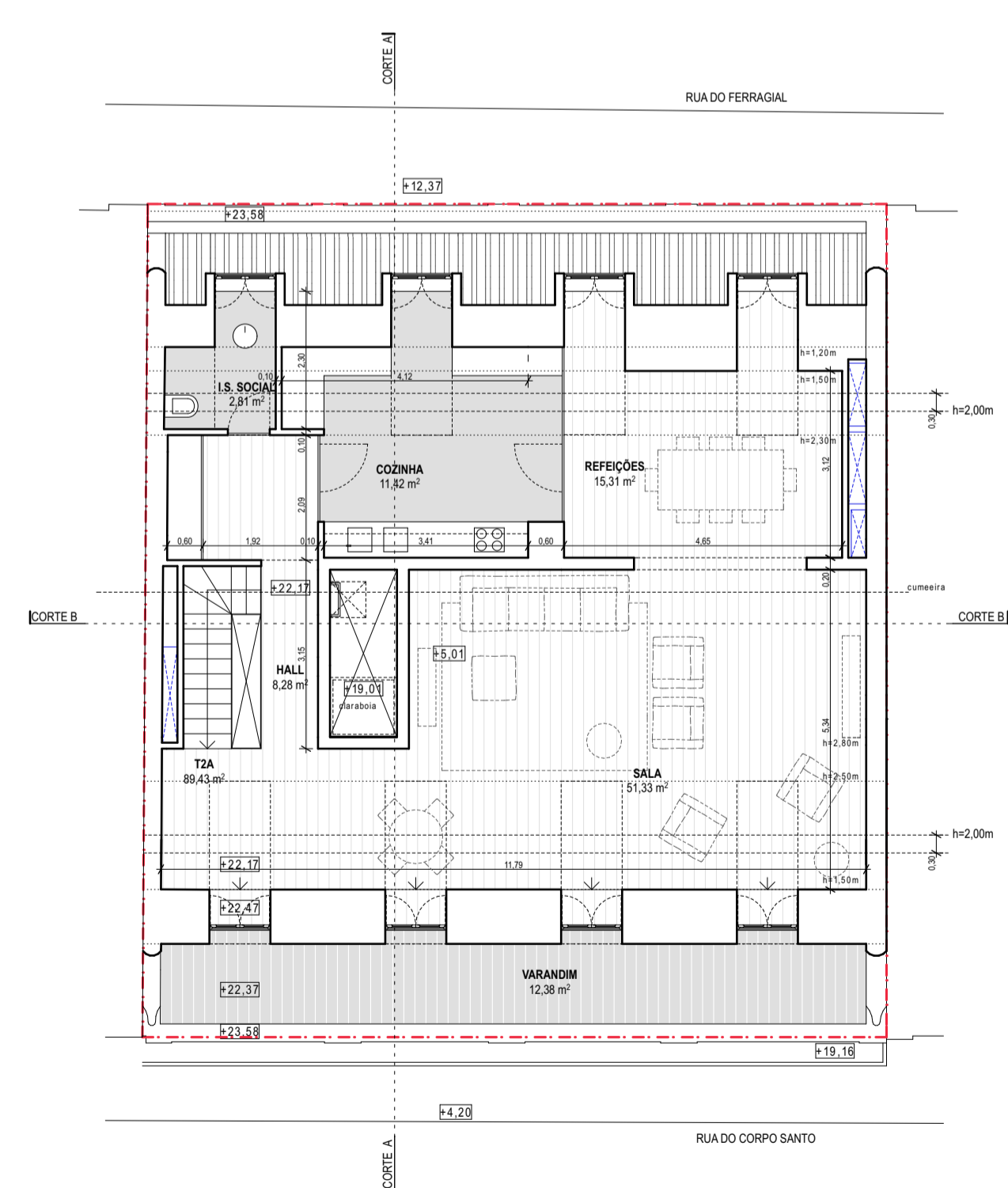
PISO +1



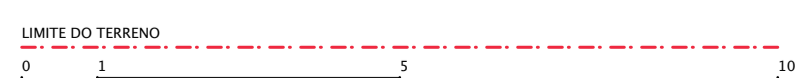
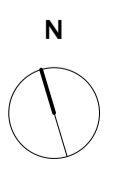
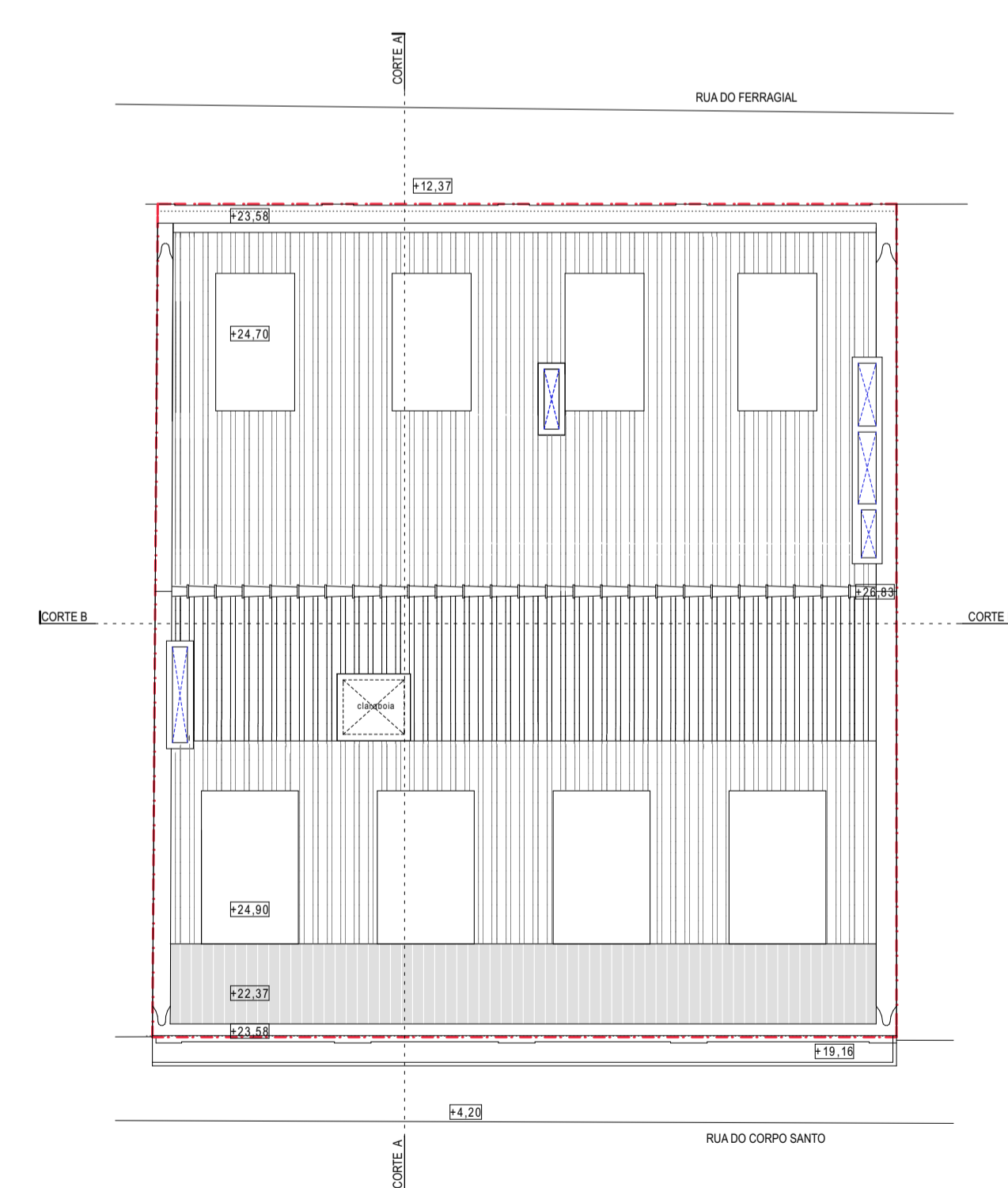
PISO +2



PISO +3



COBERTURA



DONO DE OBRA: LERCOUL PORTUGAL, UNIPESSOAL, LIMITADA		AV. ANTÓNIO AUGUSTO AGUIAR, 15, 1º ANDAR 1200-012 LISBOA TEL: +351 21208830 info@lercul.pt	
ARQUITETURA: SAMUEL TORRES DE CARVALHO - ARQUITETURA LDA.		RUA DO INSTITUTO INDUSTRIAL, 18, 1º FLO 1200-225 LISBOA TEL: +351 21 396 50 42 geral@iac-arquitetura.com	
PROJETO / FASE: EDIFÍCIO RUA DO CORPO SANTO 2 A 8 - RUA DO FERRAGIAL 23 PROJECTO DE ARQUITECTURA - TELAS FINAIS			
DESENHO: PROPOSTO - PLANTAS			Nº: CS.06-07
ESCALA: 1:100	DATA: NOV 2017	FORMATO: 59,4x84,1	FICHEIRO: CORPO SANTO 2-8 - TELAS FINAIS.pln