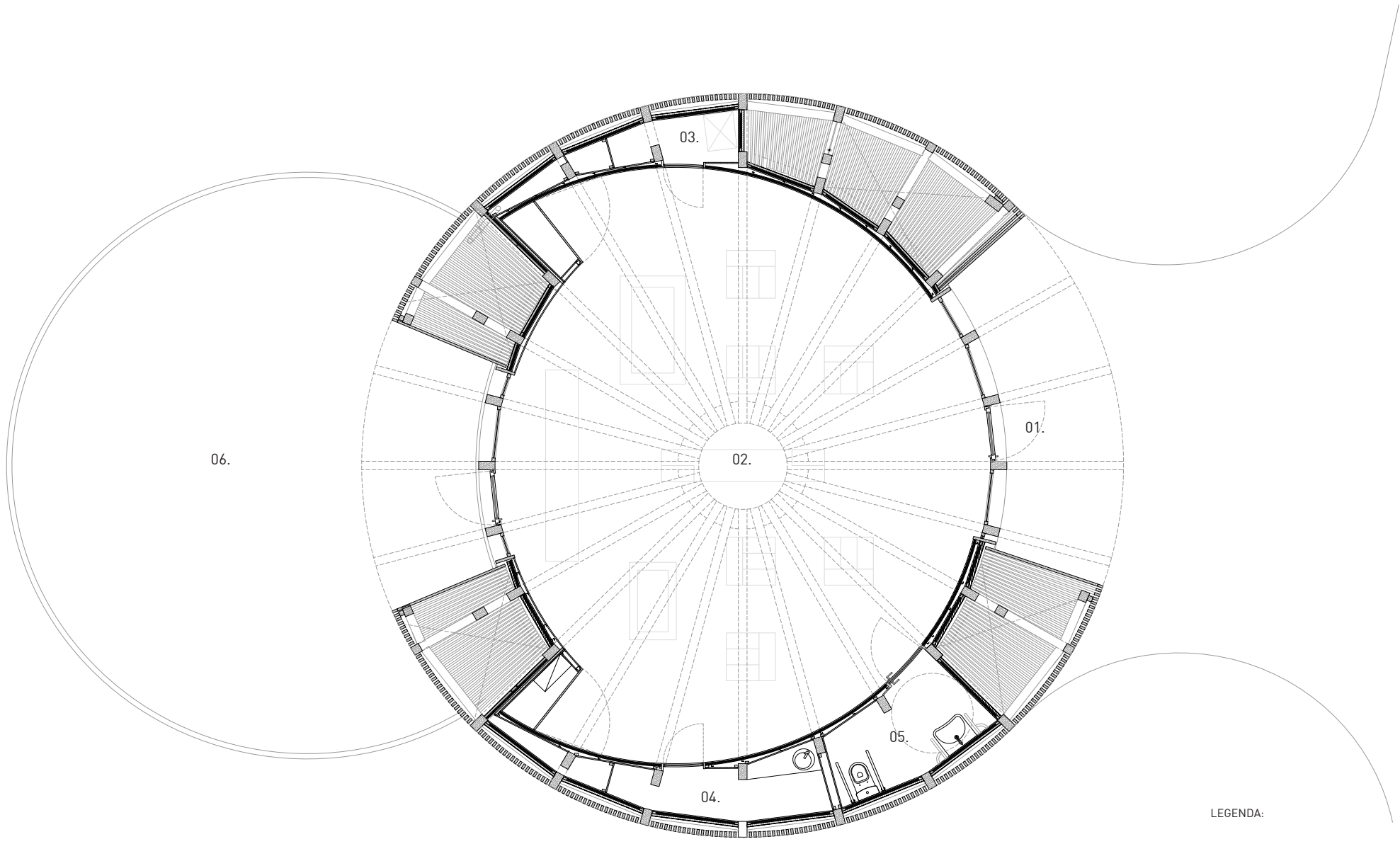


PLANTA DE IMPLANTAÇÃO





06.

03.

01.

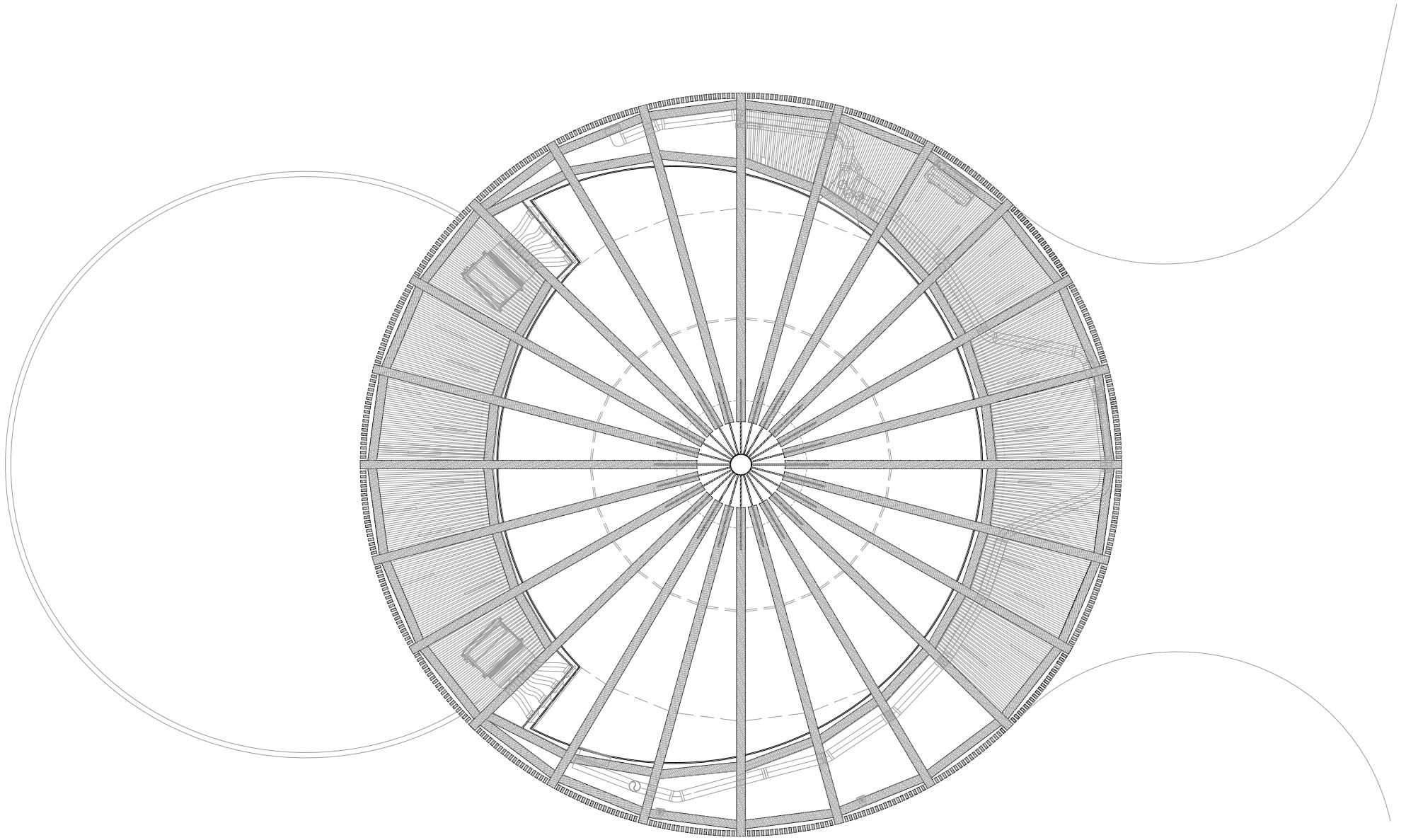
02.

05.

04.

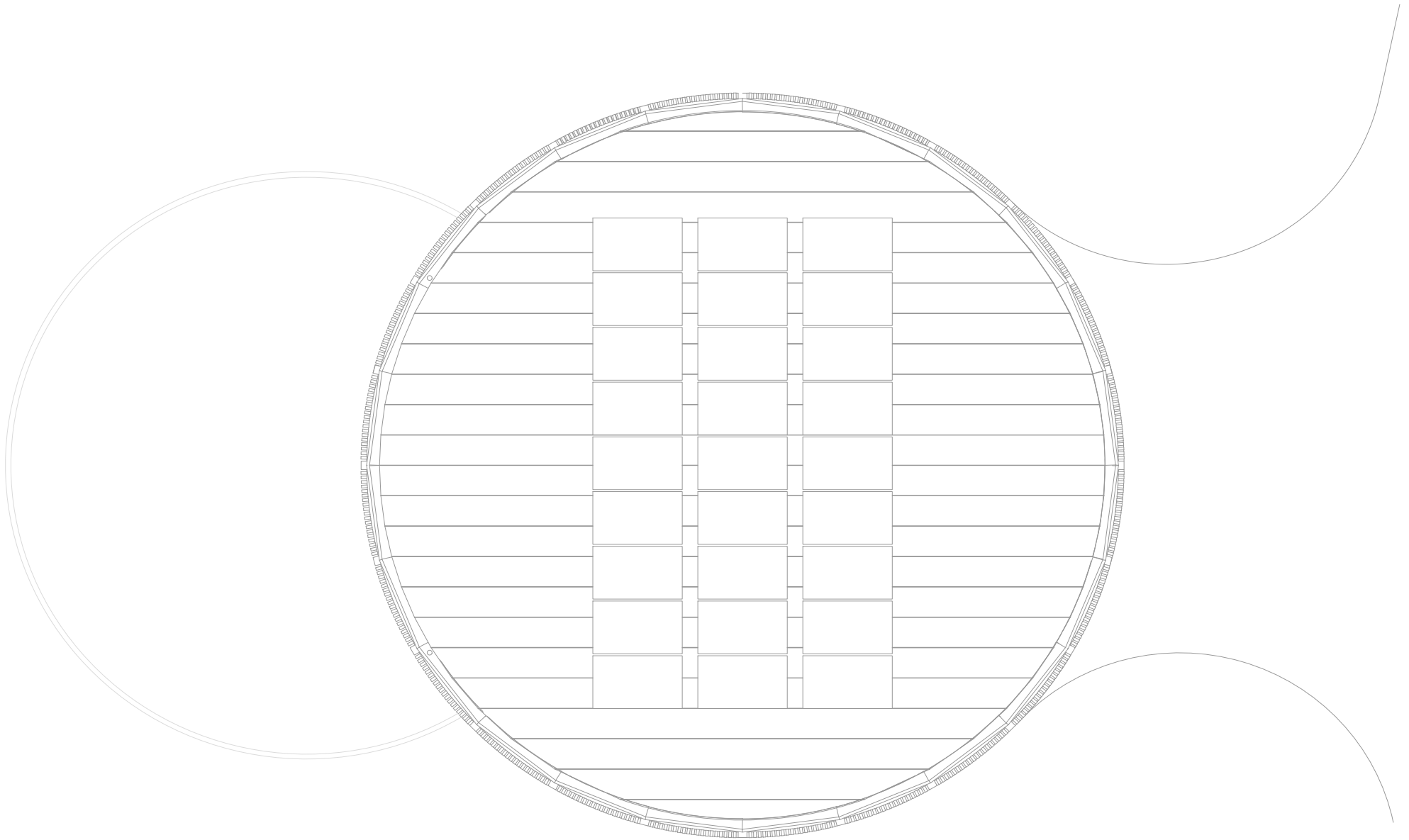
LEGENDA:

- 01. ENTRADA PRINCIPAL
- 02. ZONA EXPOSITIVA
- 03. ARRUMOS
- 04. COPA
- 05. INSTALAÇÃO SANITÁRIA
- 06. ESPELHO DE ÁGUA



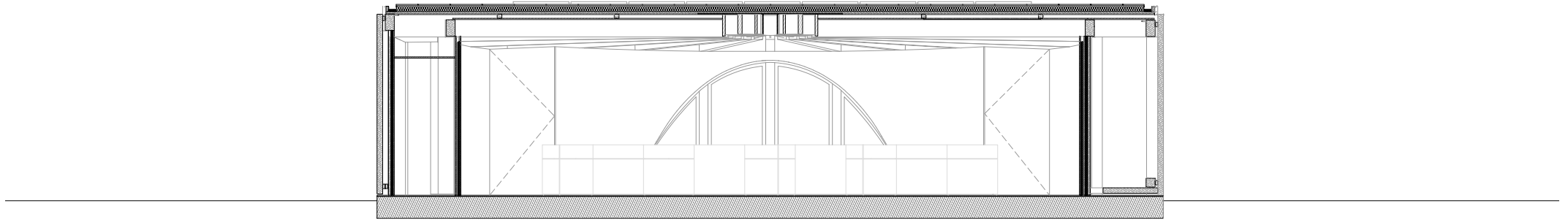
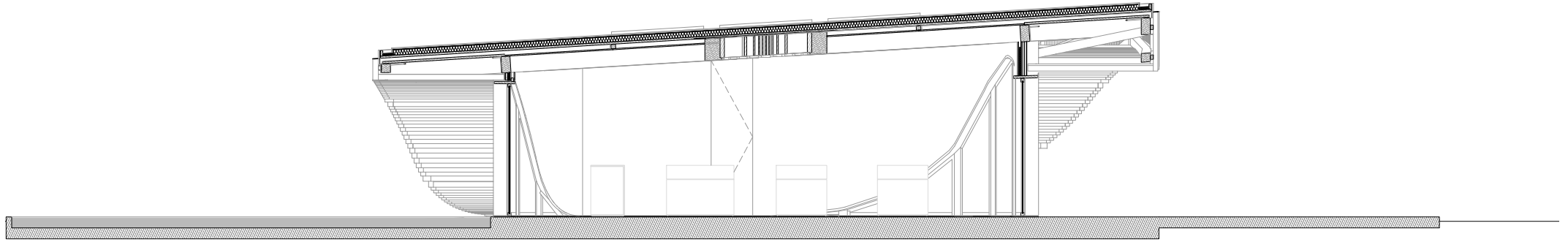
PLANTA DA ESTRUTURA DA COBERTURA

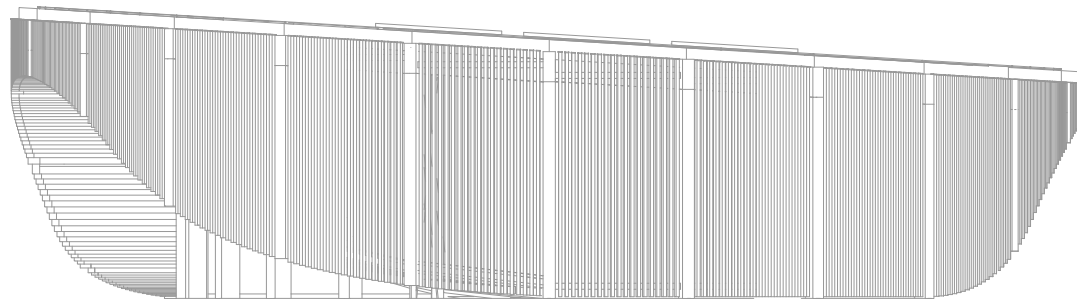
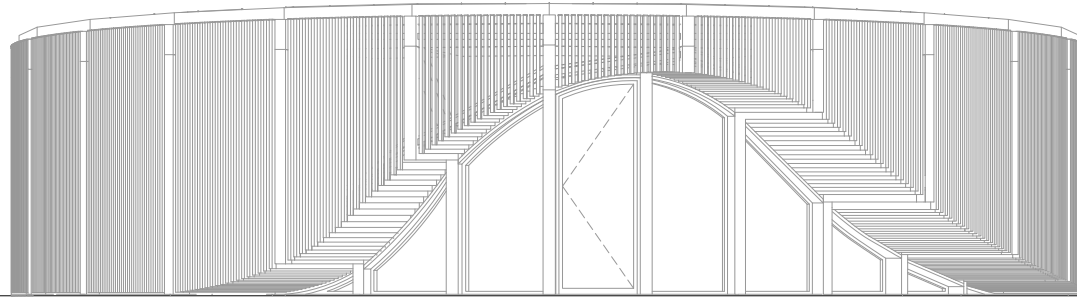


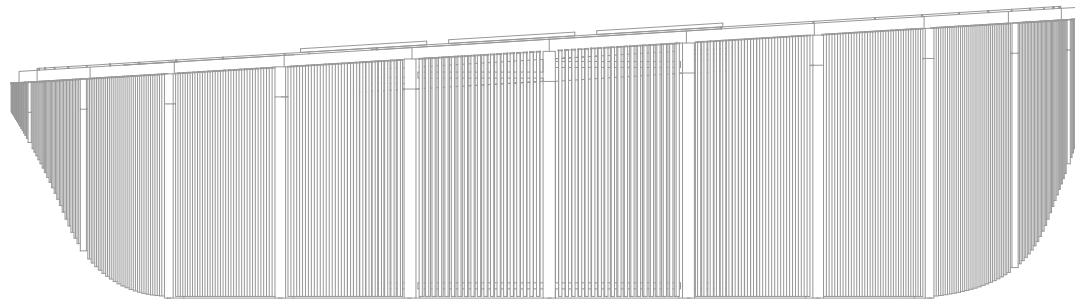
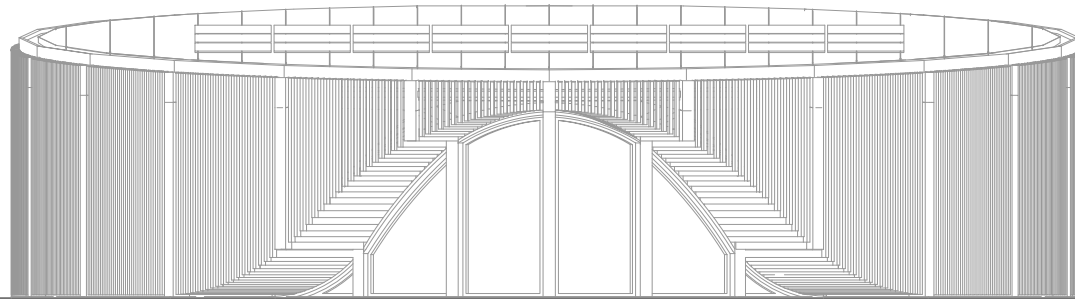


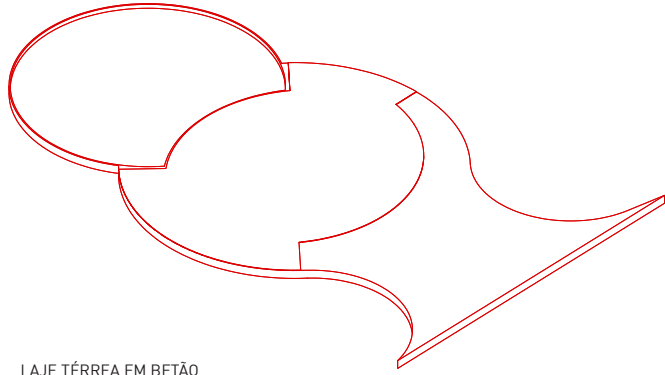
PLANTA DA COBERTURA



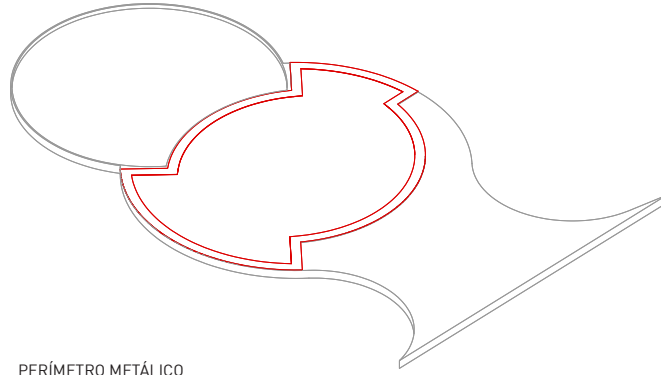




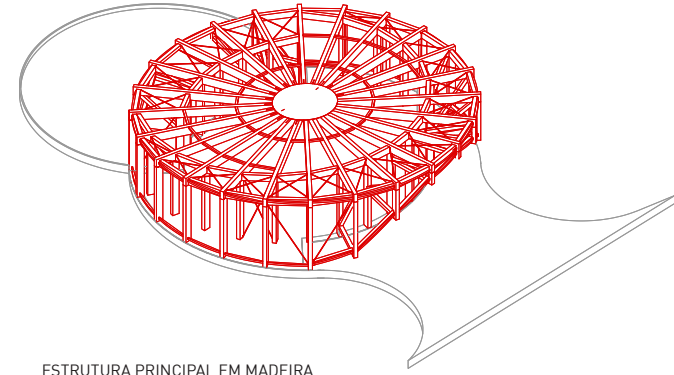




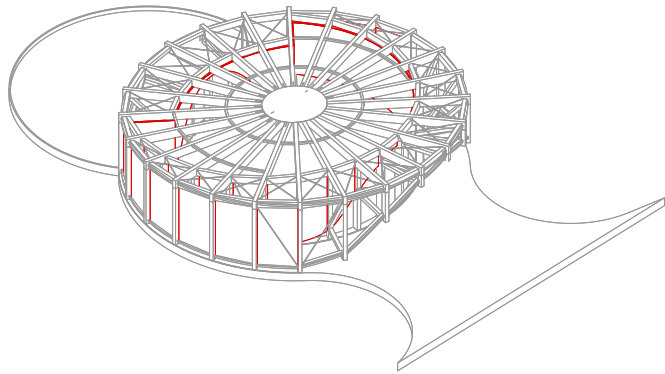
LAJE TÉRREA EM BETÃO



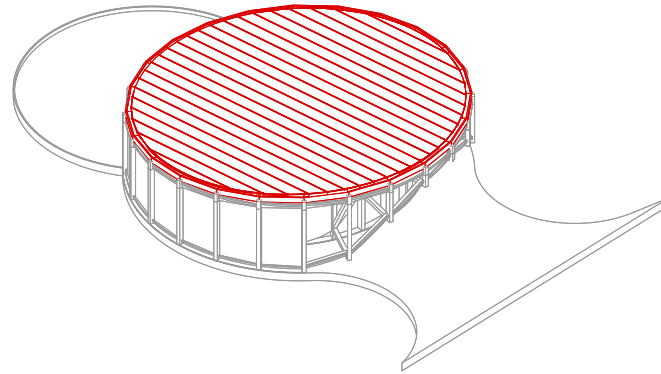
PERÍMETRO METÁLICO



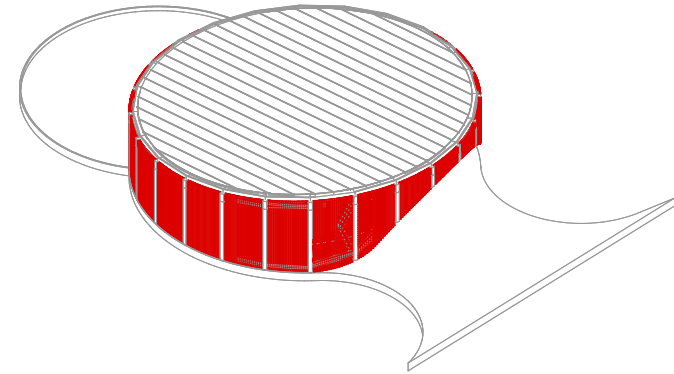
ESTRUTURA PRINCIPAL EM MADEIRA



PAREDES INTERIORES

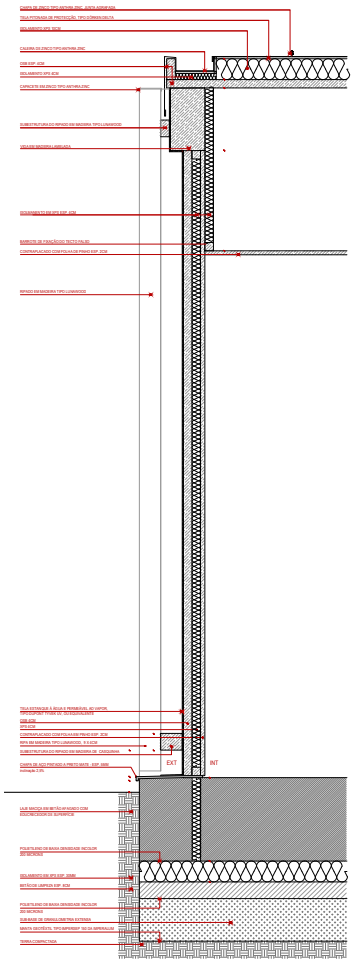


COBERTURA

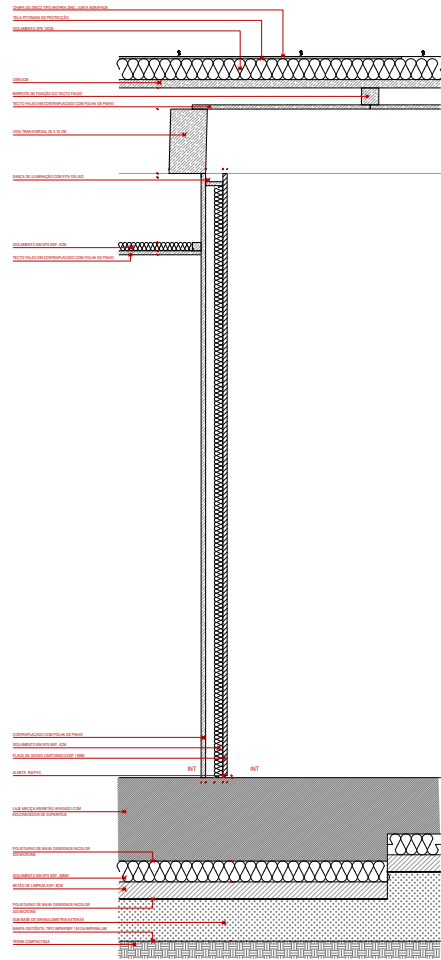


RIPADO EM MADEIRA

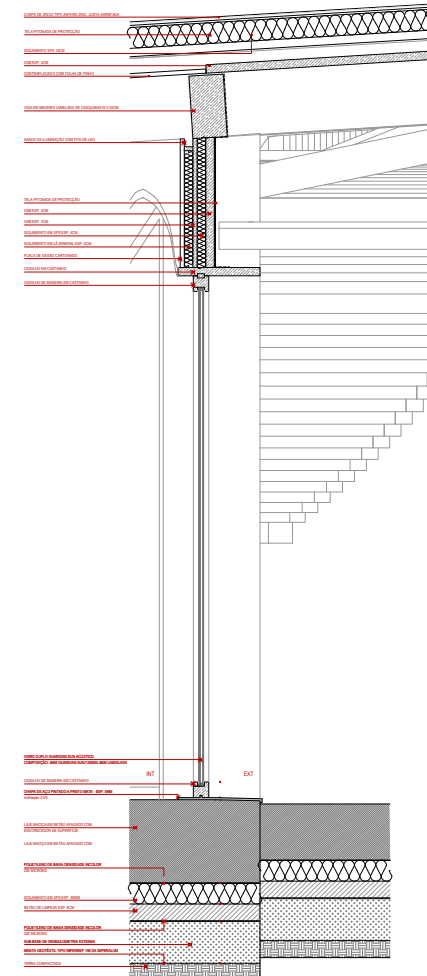




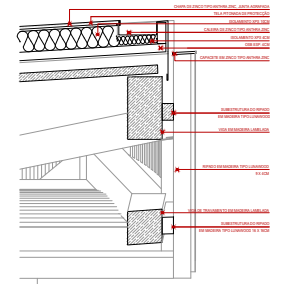
PORMENOR FACHADA



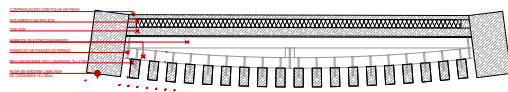
PORMENOR PAREDE INTERIOR



PORMENOR VÃOS



PORMENOR BALANÇO SOBRE ENTRADA



PORMENOR PAINEL COM RIPADO

PORMENORES CONSTRUTIVOS

